

LED Low-Voltage Streetlight Luminaire – M250 & AEL115 Style Cobraheads / 60 Watts

SLL006-3D86-TPW-004-10/30V



Operates on 10-to-30VDC — Replaces HPS up to 175 Watts — Typical Mounting Height: 22-24 feet

Module Available to Fit the Standard Roadway Lighting Cobrahead Luminaires from Major Manufacturers

FEATURES

- **Warranty:** 5 Years
- **Long Lifespan:** White LED Lumen Maintenance Greater than 70% at 35,000 Hours of Operation (*Rated average life based on engineering testing and probability analysis*)
- **Major Energy Savings:** Uses Only 60 Watts
- **Super Intensity:** 1,998 Candelas
- **Weatherproof:** Entire Lamp Assembly Is Sealed to Provide Added Protection from Adverse Environmental Conditions
- **Optimized Design:** LEDs Are Mounted to Provide Maximum Luminance at Desired Angles to the Area to Be Illuminated
- **Solid-State:** High-Shock- & High-Vibration-Resistant
- **Instant On:** No Delay in Re-Strike
- **Reduced Light Pollution:** “Dark Skies” Initiative-Friendly
- **Exterior Materials:** Die-cast Aluminum Housing with Electrocoated Grey Paint Finish, Clear Polycarbonate Lens
- Universal Two-Bolt Slipfitter
- **Less Weight:** Only 12 lbs as Compared to 39-42 lbs Conventional Lighting
- **Wide Ambient Oper. Temp. Range:** ~-22°F to ~+122°F [~-30°C to ~+50°C]
- **Made in the USA** from Imported Parts – Meets *Buy American* Requirements within the ARRA Program

Energy Independence with Alternate or Renewable Energy Resources – Solar & Wind Power

SPECIFICATIONS

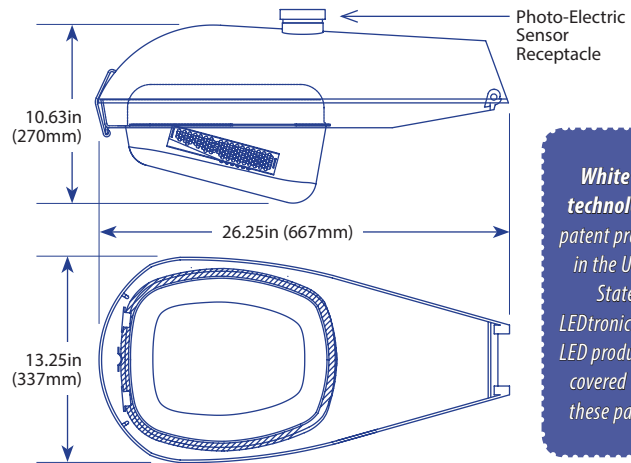
All specifications and pricing subject to change without notice

PART NO.	SLL006-3D86-TPW-004-10/30V
Emitted Color	True White
Color Temperature (CCT)	4800K~5200K
Beam Pattern	Type III Asymmetric
Viewing Angle	140°@14°L - 40°@15°W (<i>Full Beam Width @ 50% Intensity</i>)
Input Voltage	10-30 VDC (<i>Nominally @ 12VDC</i>)
Input Current	6.04 to 1.773 Amps
CRI	70~73
Energy Used	60 Watts
Efficacy	59 lm/W
Total Lumens	3869 lm
Maximum Candela	1998 cd
Pipe Mounting Diameter	1¼-2 in. Pipe (1.66 - 2.375 O.D.)
Weight	11.9 lbs / 5.4 kg



BENEFITS

- **Major Energy Savings:** Up to 70% Compared to Incandescents – 60 Watts of Energy vs. 175W by HPS (Based on 150W Lamp & 25W Transformer)
- **Enhances Vision:** Better Optical Acuity, Little or No Disability Glare Compared to High Glare from HID Lamps
- **No Harmful Emissions:** No Infrared; No Ultraviolet—Does Not Attract Insects
- **High CRI** Enhances All Colors
- **Maintenance-Free** for over 5 Years of Continuous Use
- **No Wasted Light:** Minimal Light Intrusion into Residences, Offices, etc.



CUSTOM OPTIONS [For qualified applications & large-quantity OEM orders]

- **Other Voltages Available:** 12V, 24V, 28V, 240V, 277V
- **Other Cobrahead Model Numbers Available**

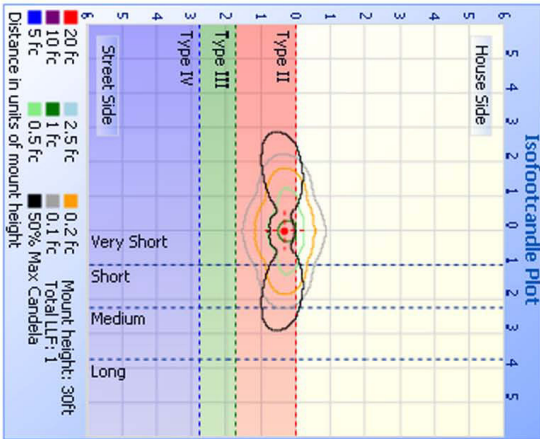
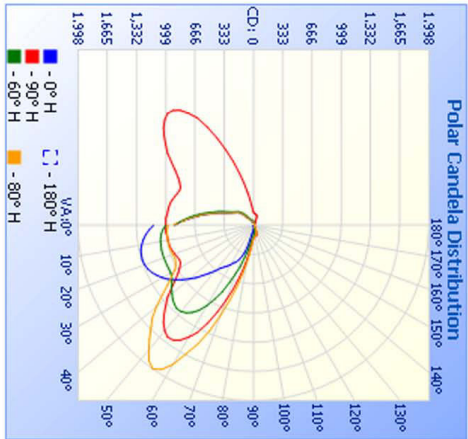
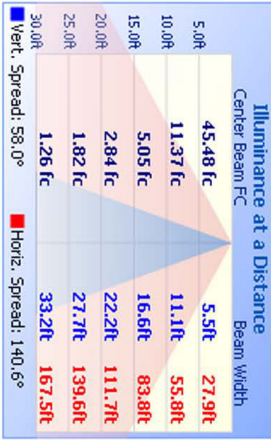
Photometric Report

Luminaire Photometric Report

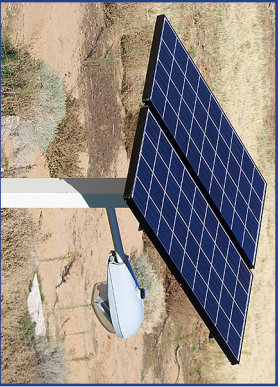
Filename: SLL006-3D86-TPW-004-10/30V
 Manufacturer: LEDTRONICS -
 Luminaire: WITH CLEAR LENS, 10-30VDC (nom.12V), 60W
 Luminaire Cat: SLL006-3D86-TPW-004-10/30V
 Lamp: : LUMEN RATING: 3524, 9Lms.
 Lamp Output: 1,996.0 (rated lamp lumens: 3524.9
 Max Candela: 1,996.0 at Horizontal: 80, Vertical: 55
 Luminous Opening Point
 Test: 4-24-09

Roadway Summary

Cutoff Classification: NON-CUTOFF
 Distribution: TYPE I, SHORT
 Max Cd, 90 Deg Vert: 158.0
 Max Cd, 80 to <90 Deg: 438.0
 Downward Street Side: 2,329.1 Lumens % Lamp 66.1%
 Downward House Side: 954.4 27.1%
 Downward Total: 3,283.5 93.2%
 Upward Street Side: 123.6 3.5%
 Upward House Side: 117.8 3.3%
 Upward Total: 241.5 6.9%
 Total Lumens: 3,524.9 100%



Applications



LEDtronics SLL006-3D86-TPW-004-10/30V area street light used for a project developed by Terawatt Construction, Inc., for remote field security applications at U.S. Marine bases.

The Borstow, California, engineering and construction company needed a low-voltage but bright light source with minimal wattage consumption. Most importantly, it needed to be American-made with reliable sustainability.

Roadway Illumination Guideline

CLASSIFICATION		I.E.S. LIGHTING STANDARD	
Street	Area	Average Illuminance (Footcandles)	Illuminance Uniformity
Major	Commercial	1.20	3.0 to 1
	Intermediate	0.90	3.0 to 1
	Residential	0.60	3.5 to 1
Collector	Commercial	0.80	3.0 to 1
	Intermediate	0.60	3.5 to 1
	Residential	0.40	4.0 to 1
Local	Commercial	0.60	6.0 to 1
	Intermediate	0.50	6.0 to 1
	Residential	0.30	6.0 to 1
Parking Lot	Open Space	0.5-2.0	4:1

NOTES

1. Source: Illumination Engineering Society of North America, "Lighting Handbook", 8th Edition, 1993.
2. Footcandle is the amount of direct light thrown by one candle on a one-square-foot surface, every part of which is one foot away from the candle.
3. Illuminance uniformity ratio is the average illuminance of the roadway design area between two adjacent divided by the lowest value at any point in the area.