

LED Street & Roadway Luminaire – M250 & AEL115 Style Cobraheads / 26 Watts

SLL006P-3D46-TPW-004



100-to-277VAC — Only 26 Watts – Replaces HPS up to 100 Watts — Typical Mounting Height: 18-24 feet

Module Available to Fit the Standard Roadway Lighting Cobrahead Luminaires from Major Manufacturers

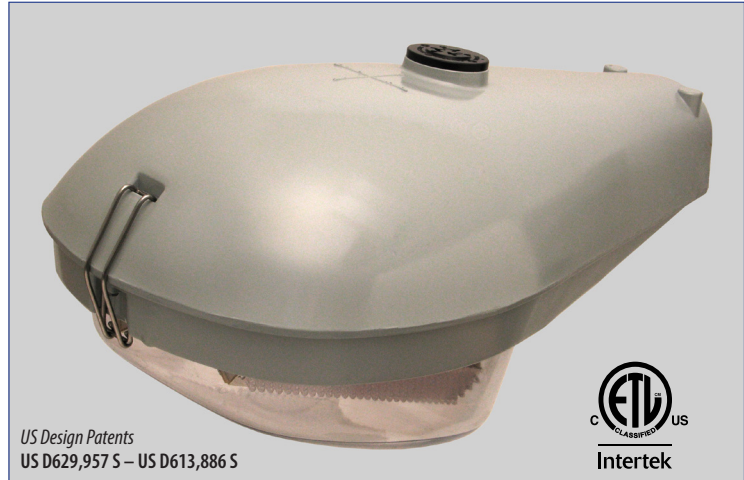
FEATURES

- **Warranty:** 5 Years
- **Long Lifespan:** White LED Lumen Maintenance Greater than 70% at 35,000 Hours of Operation (*Rated average life based on engineering testing and probability analysis*)
- **Major Energy Savings:** Uses Only 26 Watts
- **Weatherproof:** Entire Lamp Assembly Is Sealed to Provide Added Protection from Adverse Environmental Conditions
- **Ventilation** Assembly Helps Maintain Cool-Running Lamp
- **Optimized Design:** LEDs Are Mounted to Provide Maximum Luminance at Desired Angles
- Universal Two-Bolt Slipfitter
- **Solid-State:** High-Shock- & High-Vibration-Resistant
- **Super Intensity:** 963 Candelas
- **Reduced Light Pollution:** “Dark Skies” Initiative-Friendly
- **Solid Construction:** Die-cast Aluminum Housing with Electrocoated Grey Paint Finish, Clear Polycarbonate Lens
- **Less Weight:** Only 12 lbs as Compared to 39-42 lbs Conventional Lighting
- **Wide Ambient Operating Temp. Range:** ~-22°F to ~+122°F [~-30°C to ~+50°C]
- **Conformity:** Lab-Tested in Accordance with IES Standards
- **Made in the USA** from Imported Parts – Meets *Buy American* Requirements within the ARRA Program
- **Safety Assurance:** ETL Classified

SPECIFICATIONS

All specifications and pricing subject to change without notice

PART NO.	SLL006P-3D46-TPW-004
Emitted Color	True White
Color Temperature (CCT)	4800K~5200K
Color Rendering Index (CRI)	70~73
Beam Pattern	Type III Asymmetric
Viewing Angle <small>(Full Beam Width @ 50% Intensity)</small>	2×40°@55° L – 40°@20° W
Input Voltage	100-277 VAC [Tested @ 120VAC]
Input Current	0.217 A
Energy Used	26 Watts
Power Factor	1.0
Efficacy	72 lm/W
Total Lumens	1848 lm
Maximum Candela	963 cd
Pipe Mounting Diameter	1¼-2 in. Pipe (1.66-2.375 O.D.)
Weight	20 lbs / 9.1 Kg

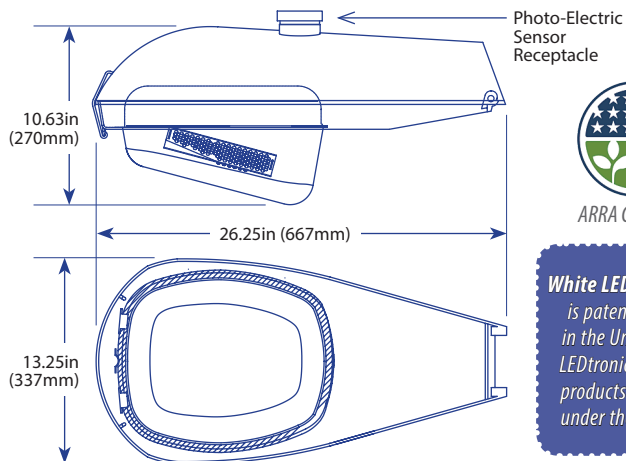


US Design Patents
US D629,957 S – US D613,886 S



BENEFITS

- **Major Energy Savings:** 26 Watts Represents a Reduction of 44 Watts from the Standard 70W HPS Lamp with 16-25W Standard Transformers
- **Maintenance-Free** for over 5 Years of Continuous Use
- **No Wasted Light:** Minimal Light Intrusion into Residences, Offices, etc.
- **Enhances Vision:** Better Optical Acuity, Little or No Disability Glare Compared to High Glare from HID Lamps
- **No Harmful Emissions:** No Infrared; No Ultraviolet—Does Not Attract Insects
- **High CRI** Enhances All Colors
- **Instant On:** No Delay in Re-Strike



White LED technology is patent protected in the United States. LEDtronics white LED products are covered under these patents.

CUSTOM OPTIONS [For qualified applications & large-quantity OEM orders]

- **Other Voltages Available:** 12V, 24V, 28V, 240V, 277V
- **Other Cobrahead Model Numbers Available**

Photometric Report

Luminaire Photometric Report

Filename: SLL006P-3D46-TPW-004
Manufacturer: LEDTRONICS -
Luminaire: WITH CLEAR LENS, 120VAC, 25.8W
Luminaire Cct: SLL006P-3D46-TPW-004
Lamp: LUMEN RATING: 1847.8lms.
Lamp Output: 1 lamp(s), rated lamp lumens: 1847.8
Max Candela: 963.0 at Horizontal: 80, Vertical: 57.5
Luminous Opening Point
Test: 4-27-09

Flood Summary

Efficiency Lumens Horizontal Spread Vertical Spread
Field (10%): 87.6% 1,618.4 n/a 131.3
Beam (50%): 46.8% 865.7 146.9 62.7
Total: 92.5% 1,709.8

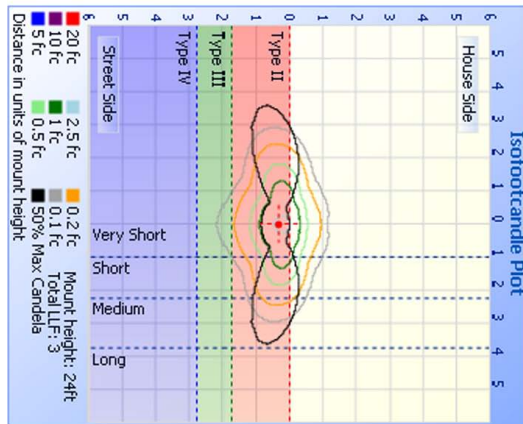
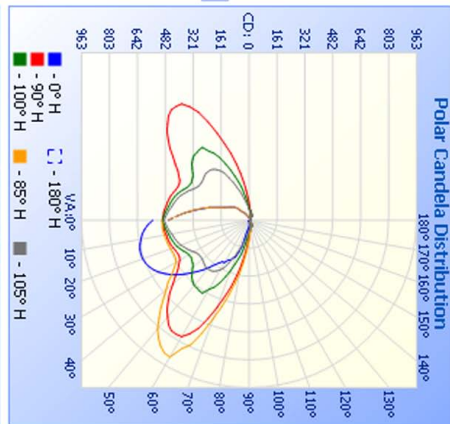
Roadway Summary

Cutoff Classification: NON-CUTOFF
Distribution: TYPE II, SHORT
Max Cd, 90 Deg Vert: 120.0
Max Cd, 80 to <90 Deg: 325.0

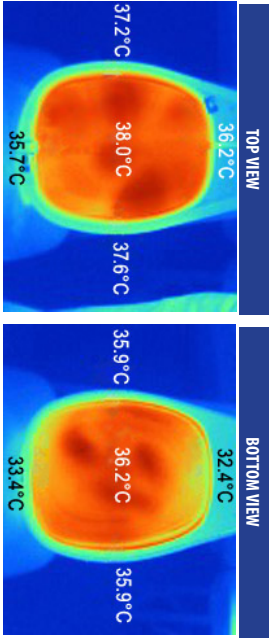
Lumens % Lamp
Downward Street Side: 1,201.3 65%
Downward House Side: 513.5 27.8%
Downward Total: 1,714.8 92.8%
Upward Street Side: 64.9 3.5%
Upward House Side: 68.1 3.7%
Upward Total: 133.0 7.2%
Total Lumens: 1,847.8 100%

Illuminance at a Distance

Center Beam Fc	Beam Width
4.0ft	34.50 fc
8.0ft	8.63 fc
12.0ft	3.83 fc
16.0ft	2.16 fc
20.0ft	1.38 fc
24.0ft	0.96 fc



INFRARED IMAGERY



Roadway Illumination Guideline

CLASSIFICATION		I.E.S. LIGHTING STANDARD	
Street Area	Average Illuminance (Footcandles)	Street Area	Illuminance Uniformity
Major	Commercial	1.20	3.0 to 1
	Intermediate	0.90	3.0 to 1
Collector	Commercial	0.80	3.0 to 1
	Intermediate	0.60	3.5 to 1
Local	Commercial	0.60	4.0 to 1
	Intermediate	0.40	4.0 to 1
Parking Lot	Commercial	0.60	6.0 to 1
	Intermediate	0.50	6.0 to 1
Open Space	Commercial	0.30	6.0 to 1
	Intermediate	0.30	6.0 to 1

NOTES

- Source: Illumination Engineering Society of North America, "Lighting Handbook", 8th Edition, 1993.
- Footcandle is the amount of direct light thrown by one candle on a one-square-foot surface, every part of which is one foot away from the candle.
- Illuminance uniformity ratio is the average illuminance of the roadway design area between two adjacent divided by the lowest value at any point in the area.